

# S-Band Integrated Sector Antenna

## WR-INT-ANT-SYS-01

### Extended coverage. Maximum performance

The power of the Wave Relay® MANET integrated directly into an antenna extends the enterprise to the edge and over large geographic areas.

### Simple installation

- Wave Relay® MANET integrated directly into antenna
- No external RF cabling reduces hassle and loss of gain
- Simple mounting bracket for quick setup
- One cable for Power + Data
- Adjustable downtilt for complete coverage

### More data over longer ranges

- MIMO technology delivers high throughput at long range
- Custom antenna polarisation designed to maximise radio performance
- No external RF cabling allows you to leverage the full gain of the antenna
- High throughput allows you to blanket large geographic areas with coverage

### Made for durability

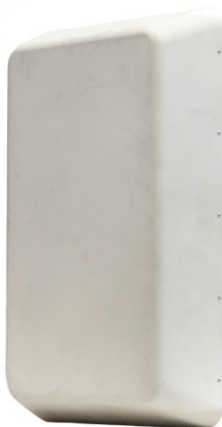
- Built for long-term installation on towers, buildings, and poles
- IP66 rated to protect against weather
- Weatherproof Ethernet connector means you don't have to climb towers in inclement weather to adjust configuration



# Specifications

Frequency	2.2 - 2.5 GHz
Polarisation	Slant L/R & Vertical
Gain	12 dBi
Transmit Power	10W
Port-to-port Isolation	>30 dB
Horizontal Beamwidths (-3 dB)	120°
Vertical Beamwidths (-3 dB)	11°
Dimensions	66 x 42.5 x 15 cm (26 x 16.7 x 5.9 in.)
Weight (Integrated Antenna Only)	4.5 kg (10 lbs.)
Mounting	1" to 2" Pole Mounting Kit 0° to -15° Elevation Downtilt Adjustment
Operating Temperature	-40°C to +60°C (-40°F to 140°F)
Interfaces	Power + Ethernet (IP66 RJ45)
Lightning Protection	Integral surge suppression
Power Input	100 - 240 VAC 50/60 Hz 24 - 48 VDC
Peak Power Consumption	45W
20% Duty Cycle Power Consumption	12.1W

Operating System	Android™ 6.0 (Marshmallow)
Processor	1 GHz Quad Core ARM
RAM	2GB
Storage	32GB Flash
Crypto Modes	CTR-AES-256 Encryption SHA-256 HMAC
Hardware	Cryptographic Acceleration Suite-B Algorithms
Ethernet	10/100 Mbps
Integrated & Extension	Seamless layer 2 network
Protocols	Advanced multicast algorithms IPv4 and IPv6 compatible Integrated DHCP server
MANET	Wave Relay® Self-Forming/Healing Peer-to-Peer No Master Node
Node Entry Time	<1 sec.
Max. Number of Hops	No Limit
Max. Number of Nodes	No Limit
Max. Distance Between Nodes	130 mi



S-Band\_Integrated\_Sector\_Antenna\_Datasheet\_08\_2019.pdf

Technical Specifications quoted are verified but do not indicate the maximum performance limitations of the equipment. Specifications are subject to change without notice. E & OE Issue A.

